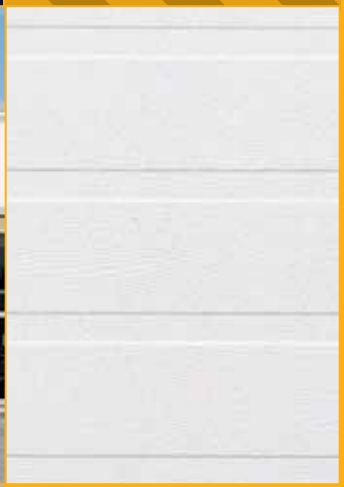


**G-5000**



**Stronger for longer**

**GARAGA INDUSTRIAL**

# GARAGA INDUSTRIAL

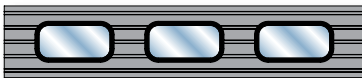
The pre-painted steel doors for industrial and commercial use offer all the advantages of a standard garage door, plus a higher insulation factor than products in the same category.

## G-5000

### Windows



Standard unit : sealed thermal glass, inserted into a molded polypropylene frame without joints and guaranteed for 10 years against seal defects. Window frames are offered in White, Black, Brown, Desert Sand, Claystone or Dark Sand.



Oval unit: sealed thermal glass in polycarbonate, inserted into a molded polypropylene frame without joints. Window frames are offered in Black.



Panoramic unit: full vision window sections (service-station type) are composed of glass sections, inserted into an aluminum extrusion. Colours offered: clear anodized or pre-painted white.

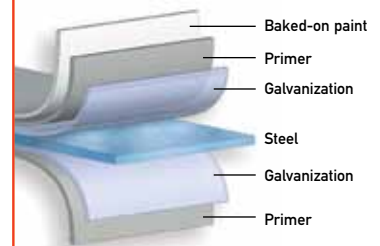
NOTE: several types of glass (tempered, wired, tinted, etc.) are available. Contact our customer service department.

### Features

- 1 26-gauge hot-galvanized steel with woodgrain finish on both sides of the door.
- 2 Rustproof baked-on polyester paint. Can be repainted.
- 3 1 3/4 in. (44.5 mm) insulated door with high-pressure injected polyurethane foam ensuring a high thermal-resistance rating of R-16 (RSI 2.8) (k= 0,357 W/m<sup>2</sup>K), and the solidity of a composite material.
- 4 Solid mechanical overlap joint: increases the weathertightness of the door and prevents delamination.
- 5 Thermal break between the interior and exterior faces of each section.
- 6 Flexible tubular bottom weatherstripping ensuring the weathertightness of the threshold
- 7 14-gauge reinforcement plates placed in the interior of the door where hinges and handles are attached.
- 8 Wood end blocks provide a thermal break with the exterior of the door. Steel end caps are available as an option.
- 9 Door weight: 1.90 lbs/ft<sup>2</sup> (9.3 kg m<sup>2</sup>)
- 10 13-gauge or 14-gauge, 2 in. (51 mm) commercial tracks (for doors of less than 140 ft<sup>2</sup> (13 m<sup>2</sup>) or 12-gauge 3 in. (76 mm) industrial tracks. Torsion spring. Sturdy galvanized steel suited to the door's usage. Springs from 25,000 to 200,000 cycles (optional) are recommended for high usage doors.

### Steel coating

Hot-galvanized steel with five coats of protective finish applied in the factory provides effective rustproofing and preserves the door's beautiful appearance for years. Given the high quality of the finish, these doors require little maintenance and no additional protection.



### Available sizes

#### Widths:

from 4' to 29' 6", in 1" increments  
from 1.2 m to 9 m in 25 mm increments

#### Heights:

from 6' to 24', in 3" increments  
from 1.8 to 7.3 m, in 76 mm increments

### Sealed thermal glass

#### Size of windows:

21 in. x 13 in. (533 x 330 mm)  
26 in. x 13 in. (660 x 330 mm)\*  
30 in. x 13 in. (762 x 330 mm)\*

#### Width of the doors:

	8'	9'	10'	12'	14'	16'	18'	24'	28'
21 in. windows:	3	4	4	5	6	7	8	11	15
26 in. windows*:	2	3	3	4	5	6	6	9	10
30 in. windows*:	2	2	3	4	4	5	6	7	9

(\*) White pvc frame only

### Full Vision Sections (Service Station)

#### Number of units per section

96 to 111 in. (2 438 to 2 819 mm) – 2  
112 to 147 in. (2 845 to 3 734 mm) – 3  
148 to 194 in. (3 759 to 4 928 mm) – 4  
195 to 216 in. (4 953 to 5 486 mm) – 5

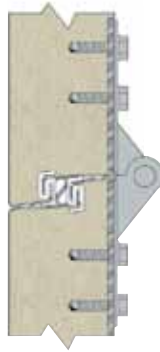
## Product warranty

Garaga guarantees its product for 10 years against any perforation of steel due to rust, 10 years on the wood end blocks against cracking and rot, 5 years against delamination of the steel from the polyurethane foam and one year on other components. Some restrictions apply. Contact our customer service department or a Garaga dealer. Garaga products are sold and installed by a network of garage door specialists throughout Canada and the United States.



## Panel intersection

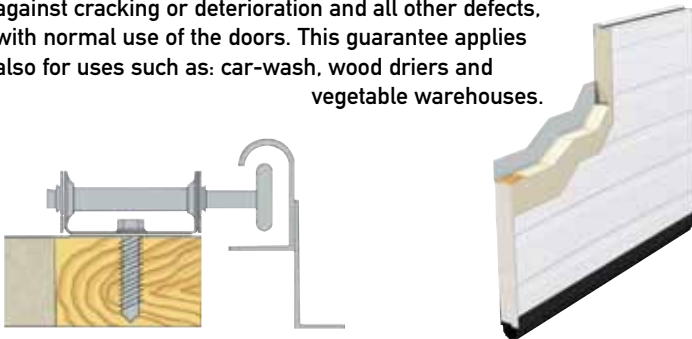
- 14-gauge steel anchor plates
- Full hinge (13-gauge)
- Solid interlocking joint with double weatherstripping contact (thermal break)



## Double end wood blocks

Wood blocks (pine) provide a thermal break between the exterior and the interior side of the door. Furthermore, the end hinges attach to the wood in the door with large screws and offer a better hold than a self tapping screw in a 16-gauge steel end cap. Thus, it is the ideal combination for a high usage garage door. Double wood end blocks are installed for doors that exceed 12 ft. 2 in. (3.7 m) in width.

Garaga guarantees the effectiveness of its wood end blocks for 10 years against cracking or deterioration and all other defects, with normal use of the doors. This guarantee applies also for uses such as: car-wash, wood driers and vegetable warehouses.



## Colors available

- Ice White
- Desert Sand
- Claystone
- Moka Brown
- Dark Sand
- Silver



Colors may vary slightly due to printing process. Classic raised panel model is also available.



## Specifications

### Product

The doors are the G-5000 model, as manufactured by Garaga Inc. The panels are roll formed and electronically high-pressure injected with polyurethane. Overall thickness: 1 3/4 in. (44.5 mm).

### Metal

Both sides of the door, are 26 gauge galvanized steel sheets, in accordance with A.S.T.M. A.642, has G-60 coating with a thickness of 0.016 in. (0.40 mm). The galvanized steel sheet G-60 has a zinc coating (or Z-180, 180 gr/m<sup>2</sup>) accordance with standard ASTM A.525-M. The polyester paint finish (2 layers) conforms with standard ASTM D.1005 and has a thickness of 1.0 mils. The surface of the steel sheet is wood-grain with five decorative horizontal grooves.

### Insulation

High-pressure CFC-free, polyurethane foam is injected between the walls of each panel. Its density is 2.3 lbs/in.<sup>3</sup> (40.4 kg/m<sup>3</sup>) with a thermal resistance factor of R16.04 (RSI 2.8) (k= 0.357 W/m<sup>2</sup>K). The insulation is in accordance with standards ONGC 51-GP-21M and 51.26-M86.

### Windload

The sections and the tracks are designed to meet or exceed the industry standard for windload. (Note: for high wind situations, consult our engineering service).

### Reinforcements

14-gauge steel reinforcement plates are inserted within the door panels to provide proper fastening for such hardware accessories as the hinges, handles and plate for the garage door operator.

### Panel ends

A block of dry pine is inserted at both ends of each insulated garage door section for the fastening of the end hinges.

### Windows

Standard:

Double thermopane windows with a total thickness of 1 in. (25.4 mm), sealed-in steel intercept spacer. Assembled units are inserted in a moulded polypropylene frame (White, Black, Brown, Desert Sand, Claystone and Dark Sand).

Full vision:

Double pane sealed, total thickness of 5/8 in. (16 mm), sealed-in steel intercept. The windows are inserted in aluminum tubular extrusions (anodized or pre-painted white) 0.063 in. (1.6 mm), and fixed with rigid PVC mouldings and brackets.

### Weathertightness

The bottom weatherstripping consists of a PVC spacer and a semi-circular TPE (Thermoplastic Elastomer) tubing.

Intersection moulding is a flexible yet rigid PVC and is found at the intersection of each panel. This type of weatherstripping will provide an efficient thermal barrier as well as double weathertightness in accordance with the following standards: when submitted to a pressure of 0.075 kPa which is equivalent to winds of 25 m/h (40 km/h), the air infiltration rating as measured using standard ASTM E-283 shall be of 0.033 litre/second per meter of joint between the door sections.

On the exterior side of the jambs and lintel, weatherstripping is made up of an aluminum spacer as well as a double-edged strip of arctic vinyl.

### Options

- 18-gauge galvanized steel end caps (single or double)
- Flexible weatherstripping on top section
- Exhaust ports of 3 in. (76 mm) in diameter

### Hardware

- Tracks of 2 or 3 in. (51 or 76 mm), are mounted with steel continuous vertical angle or with steel brackets.
- 13-gauge or 12-gauge galvanized steel hinges and 10-ballbearing rollers. Double hinges and rollers available as an option.
- 22-gauge struts.
- Torsion type spring available: 10,000 to 200,000 cycles.
- Options available: Fender guard («Z» style), track guard («L» style), chain hoist, pusher springs, tension bridge reinforcement, safety bottom brackets, flanged bearing and precision rollers.

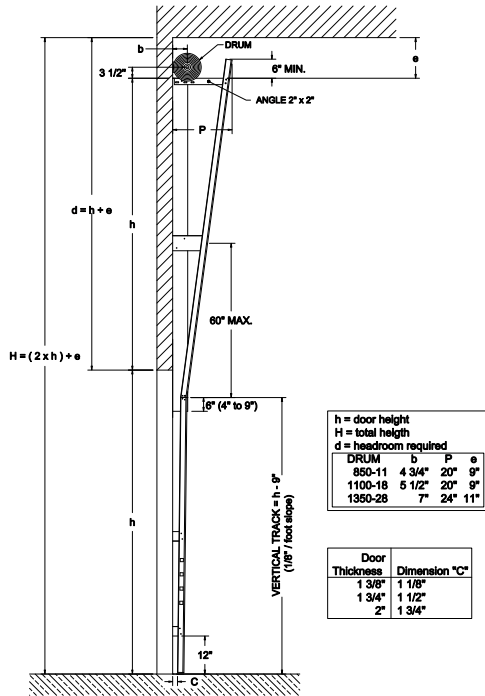
### Electric operators

- Technical documentation available upon request.

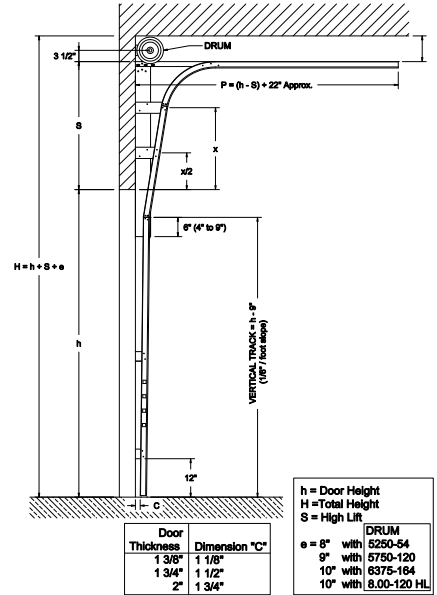
Our "Construction Specifications" booklet outlines comprehensive technical specs about Garaga garage doors. These specifications are available on request or on our Web site [www.garaga.com](http://www.garaga.com).

## Lift types

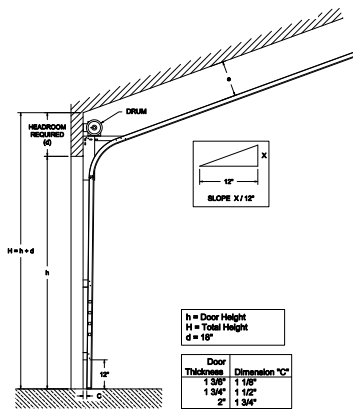
### Full vertical Lift (FV)



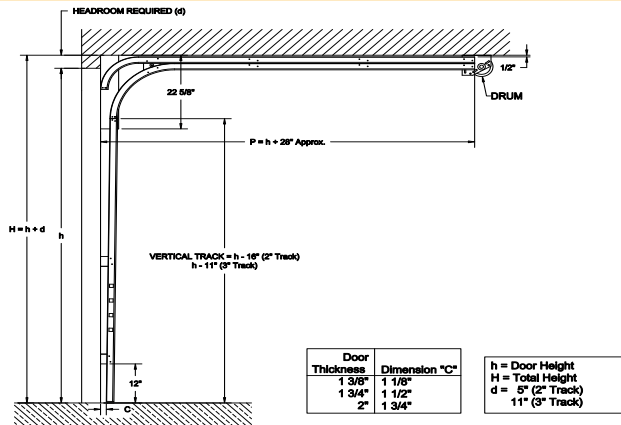
### High-Lift Track (HL)



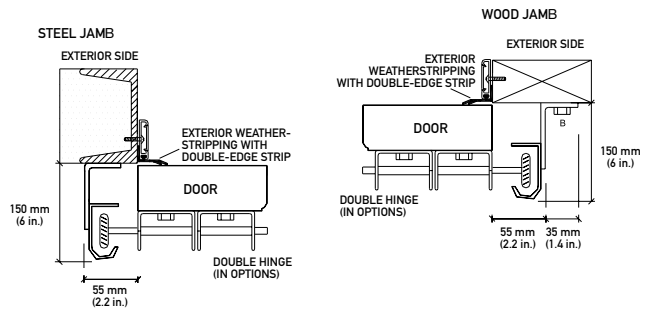
### Inclined Track



### Low Headroom (LHR)



### Door frame



### Chart for electric operator

Motor power	G-5000
1/2 HP	200 ft <sup>2</sup> (19 m <sup>2</sup> )
3/4 HP	325 ft <sup>2</sup> (30 m <sup>2</sup> )
1 HP	400 ft <sup>2</sup> (37 m <sup>2</sup> )
Door weight / ft <sup>2</sup> (approximately)	
2.0 lbs without windows	

# GARAGA INDUSTRIAL

Garaga, established in 1983, is a leading manufacturer of garage doors in Canada. Garaga continually develops state-of-the-art manufacturing technology and is certified ISO 9001.

We specialize in residential, commercial and industrial garage doors and custom hardware.

Whatever your specific needs may be, you can trust Garaga. We have an established network of certified installers throughout Canada and the United States.

**Garaga, a choice you'll never regret !**



**GARAGA Inc.**  
8500, 25<sup>th</sup> Avenue  
St-Georges, QC, Canada G6A 1K5  
Tel.: **418 227-2828**  
Fax: 418 227-6282  
E-mail: [info@garaga.com](mailto:info@garaga.com)

[www.garaga.com](http://www.garaga.com)

Products manufactured in Canada



© Garaga Inc. 2012 - All rights reserved



## Mixed Sources

Product group from well-managed forests, controlled sources and recycled wood or fibre

[www.fsc.org](http://www.fsc.org) Cert no. SGS-COC-005329  
© 1996 Forest Stewardship Council